

Rabbit anti-EBOV GP

Catalog #: 0301-015

Lot #: 1208001

Immunogen: Peptide sequence to Ebola virus (EBOV) glycoprotein (GP).

Description: Affinity purified rabbit polyclonal antibody reactive to EBOV GP. The antibody detects GP in virus-like particles (VLP) and recombinant EBOV GP without the transmembrane region (rZGPdTM) in western blot and ELISA.

Supplied: 100 µg of antibody is supplied in PBS at a concentration of 1.07 mg/mL. 0.01% Sodium azide has been added.

Raised in: Rabbits

Purification: Antibody is affinity purified using immobilized immunogen.

Clonality: Polyclonal

Relevance: The antibody can be used for detection of EBOV GP.

Recommended Dilutions:

ELISA: Assay-dependent dilution.

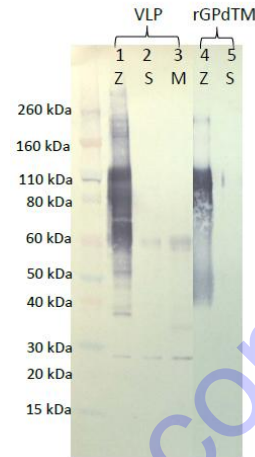
WB: Assay-dependent dilution; internal QC demonstrates detection of at least 1 µg of partially purified recombinant EBOV GPdTM with a use dilution of 50 ng per mL of antibody in diluent using an alkaline phosphatase antibody conjugate and chromogenic substrate for visualization.

Storage: 2-3 weeks +4°C, -20°C long term

Cross Reactivity: A slight cross reactivity to Sudan virus (SUDV) and Marburg virus (MARV) VLPs is noted in ELISA when high concentrations of antibody are used (See ELISA data). No cross reactivity to SUDV GP is observed in western blotting.

Intended for research use only, not for human, therapeutic, or diagnostic applications.

Western Blot Data:



Lane 1: 1 µg EBOV VLP
Lane 2: 4 µg SUDV VLP
Lane 3: 2 µg MMARV VLP
Lane 4: 0.2 µg EBOV rGPdTM
Lane 5: 0.2 µg SUDV rGPdTM

Western blots were detected with anti-EBOV GP at 50 ng/mL and visualized using an anti-rabbit AP conjugate and chromogenic substrate. GP is visualized as multiple bands representing differing glycosylation patterns as expressed in insect cells in the EBOV VLP and as a predominant single band in the rGPdTM. GP is not detected in the SUDV or MARV VLPs.

ELISA Data:

TEST Pab (ug/mL)	OD 650 nm		
	EBOV VLP @ 10 ug/mL	SUDV VLP @ 10 ug/mL	MMARV VLP @ 10 ug/mL
20.0000	4.0000	0.1797	0.1998
6.6667	4.0000	0.1010	0.1206
2.2222	4.0000	0.0749	0.0833
0.7407	3.4964	0.0594	0.0588
0.2469	2.4688	0.0668	0.0601
0.0823	1.1643	0.0614	0.0619
0.0274	0.4605	0.0607	0.0641
0.0091	0.2045	0.0691	0.0805
0.0030	0.1099	0.0610	0.0606
0.0010	0.0797	0.0616	0.0620
0.0003	0.0692	0.0635	0.0727
0.0000	0.0632	0.0685	0.0724

VLPs were solubilized in a final concentration of 1% Triton X-100 and diluted to 10 µg/mL in PBS (0.01% Triton) for plate coating. Anti-EBOV GP antibody was serially diluted 3-fold from 20 µg/mL and incubated on the coated plates. Washed plates were detected with anti-rabbit HRP conjugate and TMB substrate. OD₆₅₀ is reported above.